

# The JTC Summit

Office Space for Lease



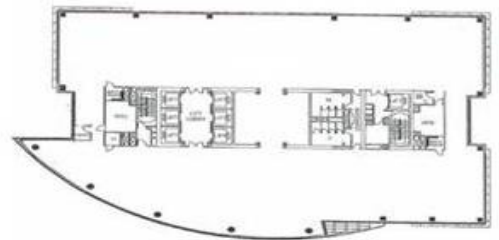
## APPOINTED AGENT

### Property highlight

JTC Summit is a 31-storey excellent quality office building strategically located in the Jurong Lake District which will become the largest commercial node and regional centre outside the Central Business District.

### Distinctive features

- 5 mins sheltered walk to Jurong East MRT and in close proximity to wide variety of F&B and retail amenities
- Column-free layout and raised flooring for efficient and flexible spatial planning
- Commands unblocked scenic views such as Jurong Lake and Bukit Timah Nature Reserve
- In-house café, auditorium, gym and childcare centre available



Units	Approx. Floor Area (sq ft)	Asking Gross Rent (\$psfpm)	Condition	Availability
07-03*	2,303	\$5.11	Bare	Immediate
24-05	1,700		Bare	
26-01*^	2,454		Bare	
26-02^	1,679		Bare	
30-02	1,346		Bare	

\*Lobby frontage

^ Contiguous



**For more information, please contact:**

**Jocelyn Low**

CEA reg no: R0499451

Direct: +65 6393 2356

Mobile: +65 9622 5177

[jocelyn.low@etcsea.com](mailto:jocelyn.low@etcsea.com)

For further info, please contact : Business Space & Retail 62933228

Copyright 2016, Edmund Tie & Company. The information herein was lawfully obtained from sources we consider reliable. Edmund Tie & Company is not responsible and expressly disclaims all liability for omissions, errors, prior sales, withdrawal from the market or change in price. The Seller (or Lessor, as the case may be) and broker make no representation with regard to the environmental and physical condition of the property and recommend the Purchaser's (or Lessee's) independent investigation.